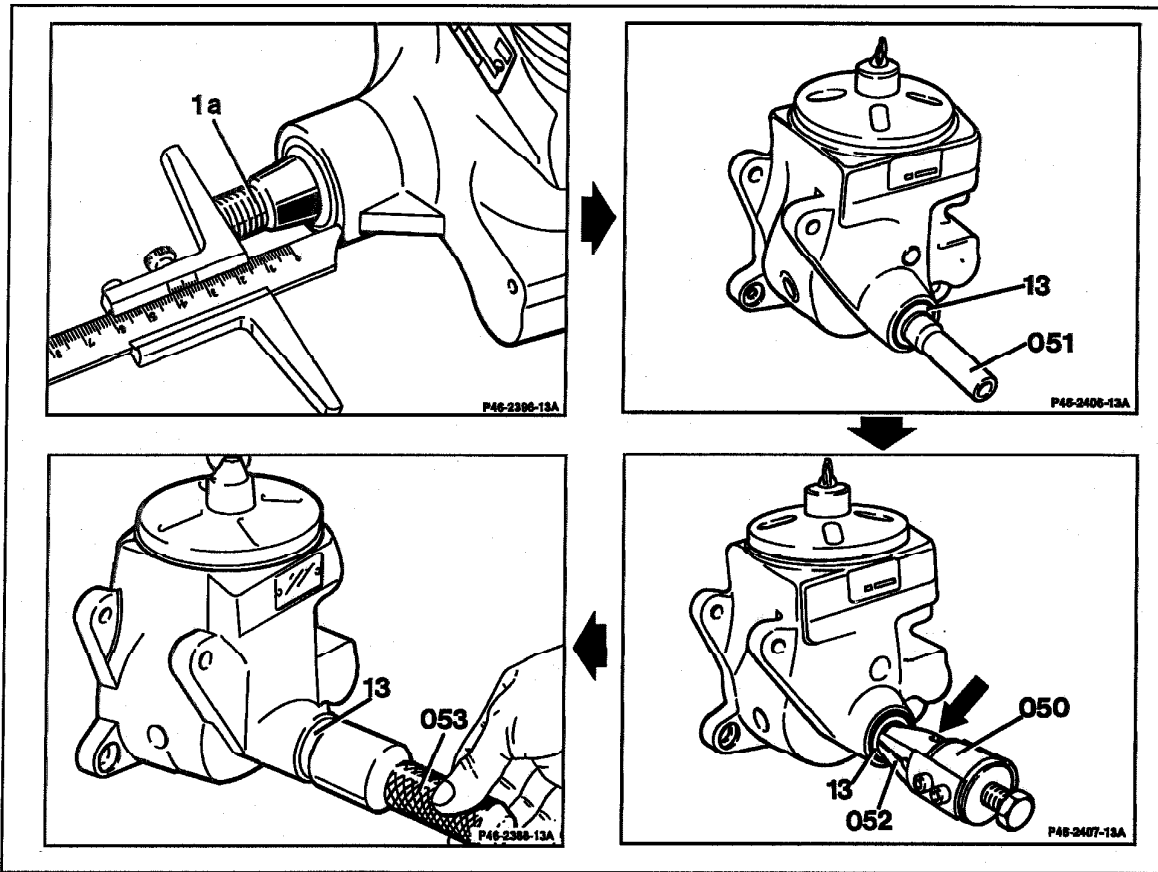


46-705 R and R power steering pump seal

Preliminary work:
Power steering pump removed (46-710).



P46-5072-57

⚠ CAUTION!

Seals can only be replaced on power steering pumps VL 49 and ZL 49. All other power steering pumps must be completely disassembled.

46-705 R and R power steering pump seal

Pump shaft (1a)	remove Woodruff key, install. Measure pump shaft (1a) protrusion in relation to pump flange and note.
	Note After removing the radial sealing ring measure the protrusion again. The measured values for the first and second measurements should be the same. If the protrusion is greater for the 2nd measurement than for the 1st measurement, the power steering pump requires overhauling.
Guide sleeve (051)	screw onto pump shaft (1a), screw off.
Radial sealing ring (13)	attach puller (050) 116 589 24 33 00 and clamping jaws (052) 116 589 06 34 00 and turn clamping cone (arrow) to right against stop; then pull out radial sealing ring (13).
Radial sealing ring (13)	knock in with punch (053) 116 589 14 15 00.

Special tools

